

Wire Bracelet Tutorial

Courtesy of Lotus Beads



Materials needed:

Round nose pliers

Flat nose pliers

Ruler

Pliers for cutting wire

Pin vise (optional)

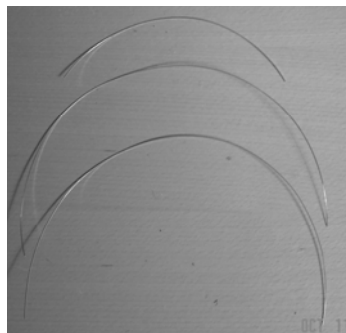
45" Square 22 gauge half hard sterling silver or gold filled wire

12" 20 gauge half hard sterling silver or gold filled 1/2 round wire

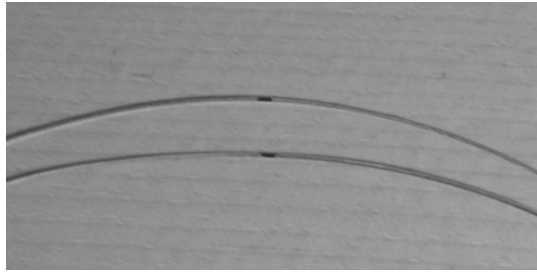
1 20-30mm oval focal bead

8 8mm round or nuggets shaped beads

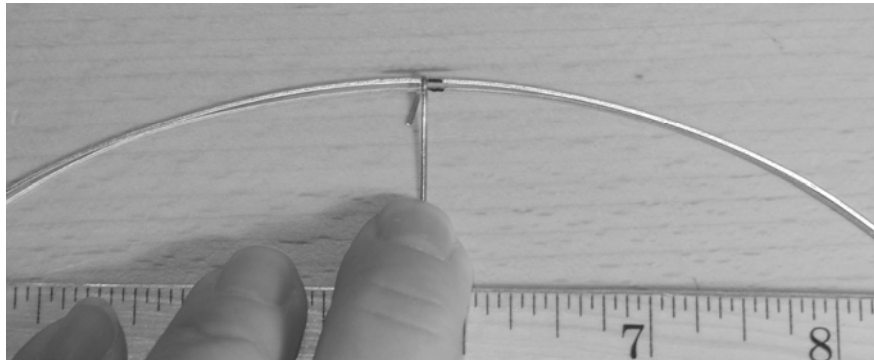
1. Cut 22 gauge square wire into 3 pieces, 2 at 18" each and 1 piece 9". At this point you should have 2 18" and 1 9" long pieces of square wire.



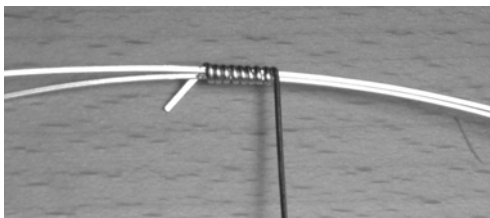
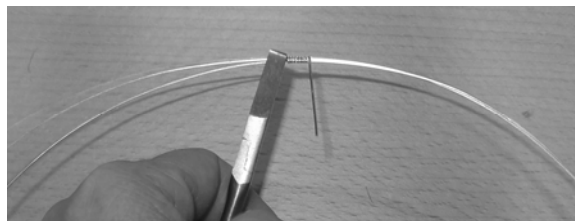
2. With permanent marker mark the center point of both 18" pieces of wire.



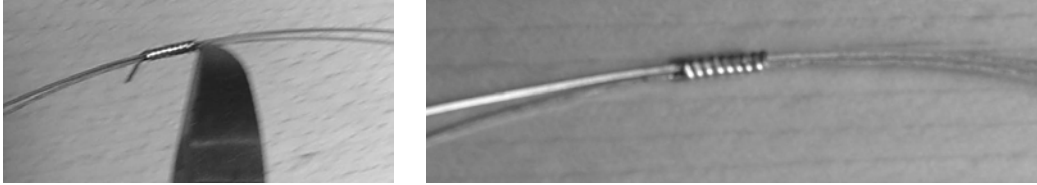
3. Cut a 3" piece of 20 gauge 1/2 round wire. Bend over 1/4" of wire with flat nose pliers and hold in place with flat nose pliers while twisting around center of 2 18" pieces of square wire at center marked above. Make sure the flat side of wire is facing inwards and round surface of wire faces out. Take a few minutes to look at 1/2 round wire and become familiar with difference in 2 sides before wrapping.



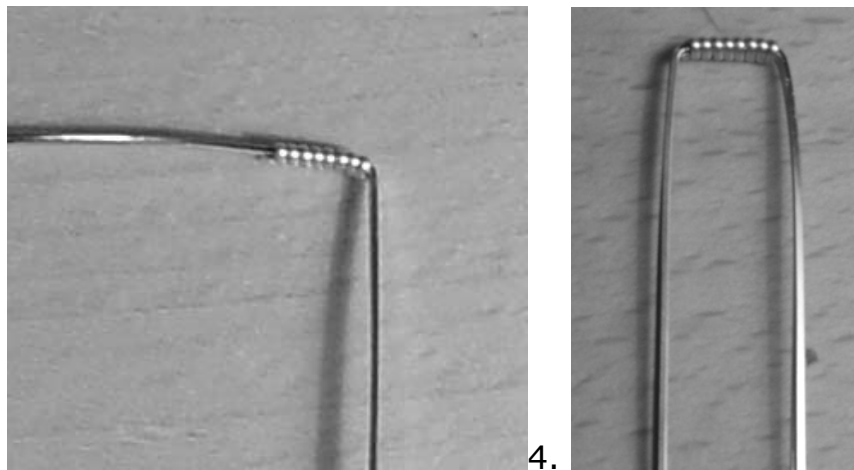
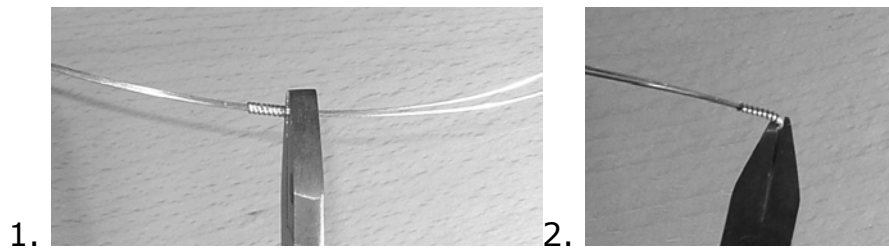
4. Wrap 1/2 round wire around square wire 8 times.



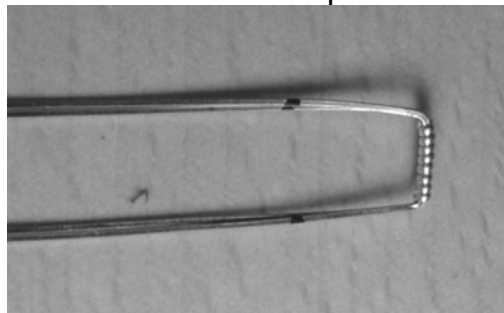
5. Squeeze wrapped area with flat nose pliers and trim off extra wire. Cut wire on angle so that there are no sharp edges sticking out. Flatten cut ends with flat nose pliers. Cuts should be on same side of wire, which will later become inside of clasp.



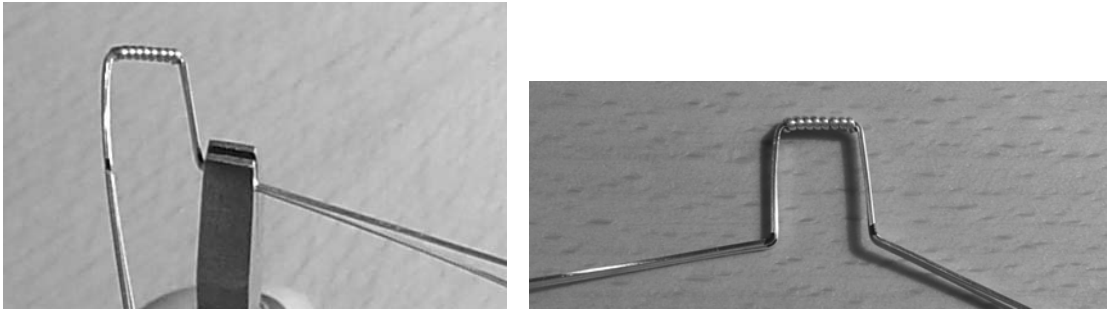
6. Fold wire in on both sides of wrap with flat nose pliers. Be sure to fold in toward side of wrap ends, so the ends are less likely to get caught on something when wearing the bracelet.



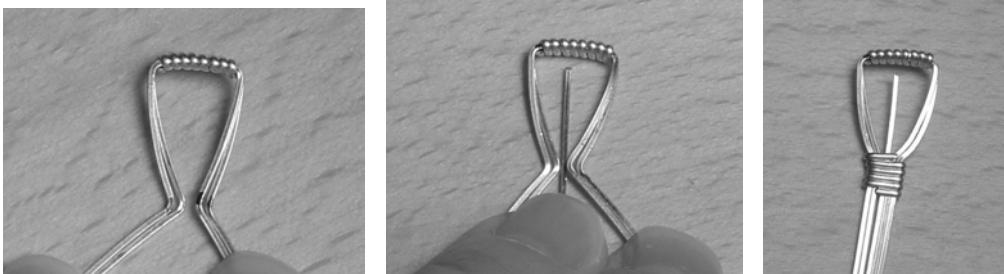
7. With a permanent marker make a mark $\frac{1}{2}$ inch down from the wrapped section on both sides of square wire.



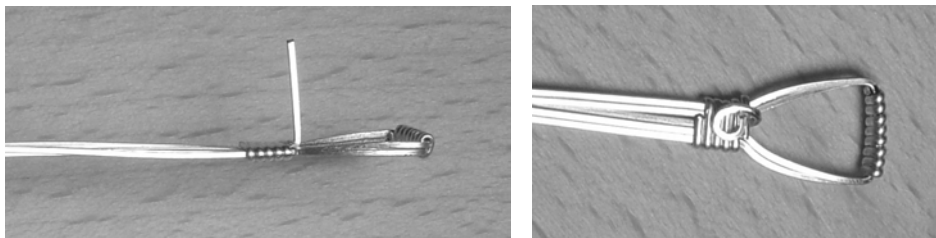
8. With the flat nose pliers bend each side out.



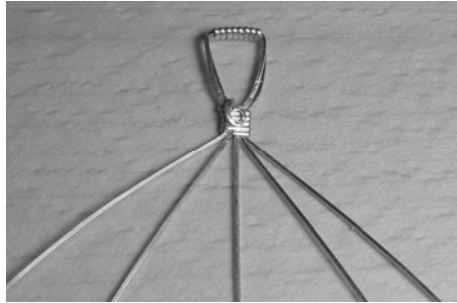
9. Cut a 3" piece of 1/2 round wire. Push sides of square wire together. They should meet at the point where they are bent. Slide 9" square piece of wire in the middle of junction. Top of this wire should almost touch wrapped area above junction. Lightly squeeze the 4 wire junction with flat nose pliers to ensure the wires are snug against each other and not overlapping. Wrap intersection of square wires 5 or 6 times with 1/2 round wire as shown in step 3 and 4. Squeeze the wrap lightly and trim ends on same side. This will be the inside of the bracelet.



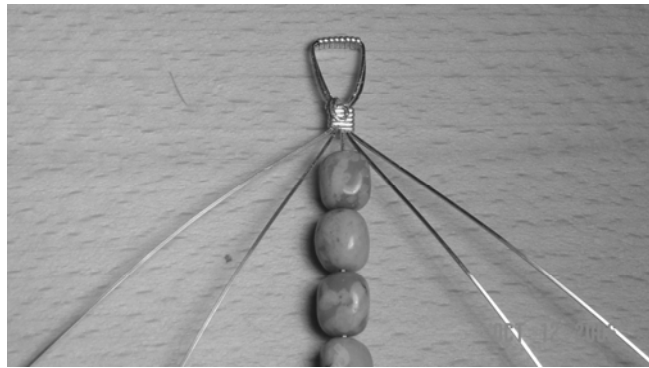
10. Take top of square wire that is loose in middle of clasp and push through other side. Turn piece over and adjust this wire to 90 degrees from other wires. This will be the outside of the bracelet (not side where ends of wire were cut). Twist this wire into a coil and flatten with flat nose pliers against wrap.



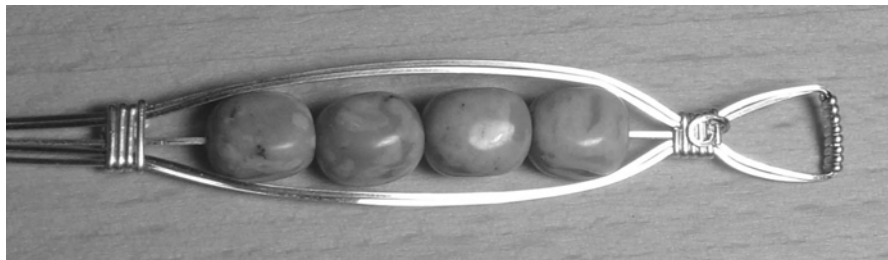
11. Hold clasp in left hand and pull of wires with right hand to straighten and work harden wires. Fan out wires from center.



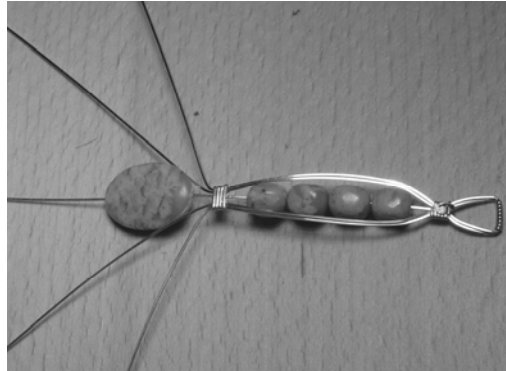
12. Put 4 of the 8mm round or nuggets shaped beads on middle wire.



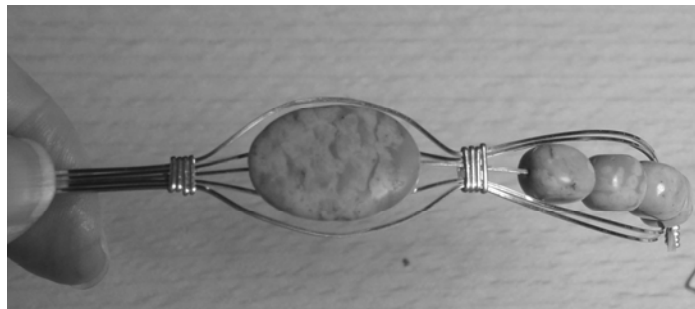
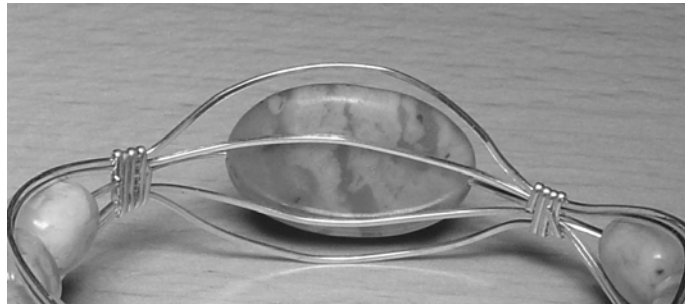
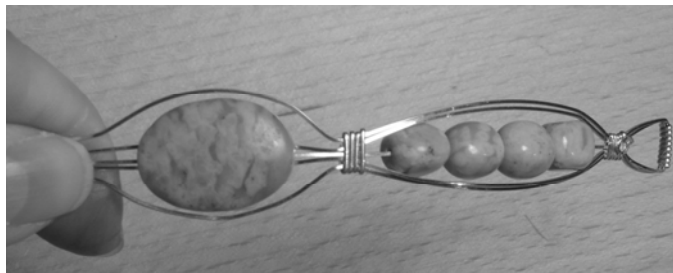
13. Pull 4 wires snug against beads and wrap just past beads using 3" of 1/2 round wire. See step 3 and 4 for wrapping instructions. Make sure ends of wires are trimmed on inside of bracelet.



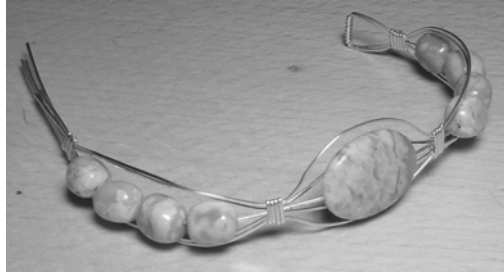
14. Fan wires out as in step 10. Pull on wires to straighten and work harden. Place 20-30mm focal bead on center wire.



15. Slide 2 inner wires behind focal bead and out 2 wires in front or along the side of focal bead. Start to bend finished portion in to rounded bracelet shape. Use tips of thumb to shape outer wires around edge of bead or on top of bead. With 3" of 1/2 round wire wrap 4 or 5 times as shown in step 3 and 4.



16. Fan wires apart as in step 10. Pull on wires to straighten and work harden. Add 4 beads to center wire and wrap with 3" 1/2 round wire per instruction in step 3 and 4.



17. Cut wires straight across 3/4" from last wrap. Using round nose pliers bend over wires to make a hook. Shape bracelet into an oval, similar to the shape of the wrist.

